

Heraeus

# PALAGUN®

Bone Cement Mixing System – Disposable Cement Gun

Instructions for use

# PALAGUN®

Device name: **PALAGUN® Bone Cement Mixing System**

Type: **CL006-02**

REF: 5082371

## 1. Product description

**PALAGUN®** is a sterile disposable cement gun and is intended to accommodate mixing cartridges to ensure precise and effortless application of the bone cement. The mixing cartridges of the following products can be used: **PALAMIX®** vacuum mixing system, **PALACOS® R pro** and **PALACOS® R+G pro**.

**PALAGUN®** is used exclusively in combination with the products named.

## 2. Package contents and composition

One **PALAGUN®** set contains:

- 1 **PALAGUN®** system including a locking cover
- 1 instructions for use

**PALAGUN®** is double packed. The outer bubble pouch is for transportation purpose only and therefore unsterile. Inside this outer pouch is an inner pouch that is unsterile from the outside and sterile from the inside. This inner pouch contains the set.

All components of the **PALAGUN®** are made of medical-grade plastic and are latex-free and PVC-free. The product does not contain any critical substances such as phthalates, plasticisers, allergenic substances or potentially carcinogenic substances.

## 3. Indications

**PALAGUN®** is intended to accommodate mixing cartridges to ensure precise and effortless application of the bone cement. The mixing cartridges of the following products can be used: **PALAMIX®** vacuum mixing system, **PALACOS® R pro** and **PALACOS® R+G pro**.

## 4. Contraindications and restrictions on use

**PALAGUN®** is used exclusively in combination with the products named under the indications. Other mixing cartridges are not compatible.

## 5. Side effects

There are no side effects associated with **PALAGUN®**.

## 6. Interactions

There are no interactions associated with **PALAGUN®**.

## 7. Warnings, precautions and relevant information

### User

Before using **PALAGUN®**, the user should be well-acquainted with its properties and handling. We recommend that users practise the complete procedure before using it for the first time. The user must also be familiar with the bone cement and the mixing and application system used. The instructions for use for all the products used must be noted beforehand.

**PALAGUN®** may only be used if it is undamaged.

## 8. Handling

### General information

**PALAGUN®** is intended for single use and must not be reused or resterilised.

The **PALAGUN®** should only be used by trained personnel. There is a risk of hand injury or damage to the protective glove if the device is not handled properly. The particular mixing cartridge used may also be damaged such that the bone cement application may be hampered or impossible.

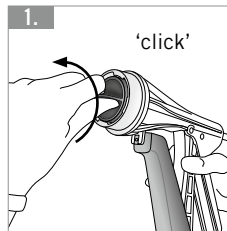
### Opening

The pouch must only be opened under sterile conditions. For this purpose, the inner pouch is available sterile after the removal of the outer pouch. If the sterile barrier is damaged, the **PALAGUN®** must not be used and must be disposed of.

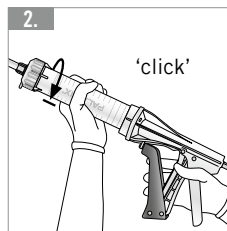
### Preparation

Before using the **PALAGUN®**, it should be checked for any damage and completeness.

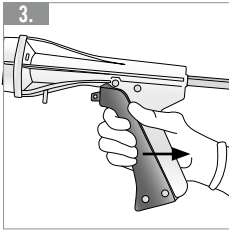
### Use



Turn the locking cover anticlockwise until a 'click' is heard, then release and remove.



Attach the mixing cartridge of the products named under the indication onto the **PALAGUN®** until a 'click' is heard.



The trigger of the **PALAGUN®** bone cement gun is operated by hand to expel the bone cement from the cartridge. Activating the trigger pushes forward the feed rod in the mixing cartridge and expels the bone cement under high pressure.

#### Anomalies

**PALAGUN®** should not be used if the packaging is damaged.

The product should also not be used if any product components are damaged or missing.

#### Incompatibilities

None known based on current knowledge.

#### Disposal

**PALAGUN®** and the outer packaging can be disposed of in normal hospital waste. Please comply with local environmental legislation and waste disposal regulations.

#### **9. Storage**

**PALAGUN®** must be stored unopened in a dry and clean place in the original packaging.

#### **10. Shelf-life**

The expiry date is shown on the outer pouch. **PALAGUN®** must not be used after the specified expiry date has passed.

#### **11. Sterility**

**PALAGUN®** is sterile and was sterilised with ethylene oxide (EO) gas.

The contents of unused, opened or damaged packs must not be resterilised and must be discarded.

**PALAGUN®** is intended for single use and must not be reused or resterilised because the product quality will be negatively affected by repeat sterilisation.

## Symbols



Manufacturer



Catalogue number



Consult instructions for use



Batch code (Lot number)



Sterilized using ethylene oxide



Do not use if the product sterile barrier system or its packaging is compromised



Do not re-use



Do not re-sterilize



Use by date



Keep dry



Federal law U.S.A. restricts this device to sale, distribution, and use by or on the order of a physician

CL006-02-INE(Z) / Rev.: B

USA Agent:  
SUNGO Technical Service Inc  
6050 W Eastwood Ave Apt 201, Chicago, IL 60630  
Tel: +1-855-9577779



Manufacturer:  
Guangzhou Clean Medical Products Manufacturing Corp.  
No.9 Guangcong Road, Conghua Development District,  
Guangzhou, China. P.C.: 510990  
Tel: +86-20-87654060  
Fax: +86-20-87303882  
E-mail: [Info@cleanmfg.com](mailto:Info@cleanmfg.com)  
Web: <http://www.cleanmfg.com>

PALAGUN® is a trademark of Heraeus Medical GmbH.