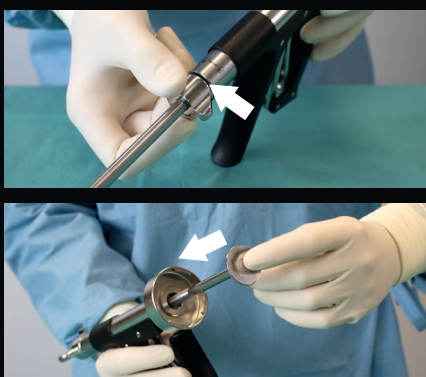
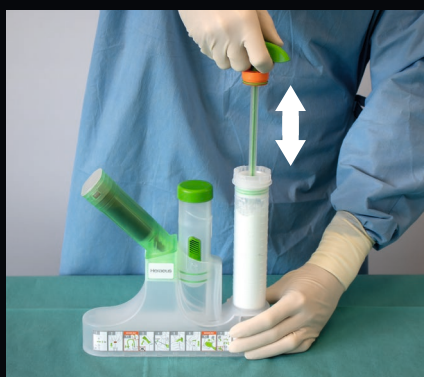


pro ALL-IN-ONE FIXATION SYSTEM™

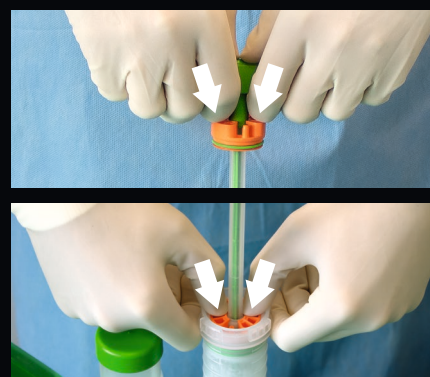
HANDLING GUIDELINE



1. Prepare the cement gun by unlocking the release mechanism and slide through the feed rod until it stops. Then lock again the release mechanism.



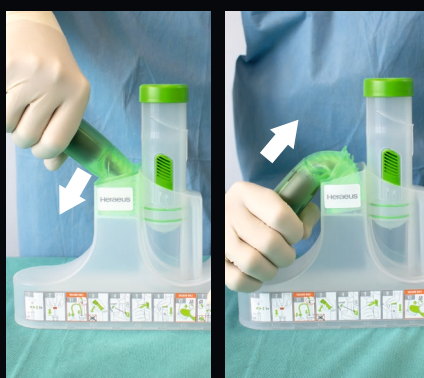
2. Loosen the powder by moving the mixing rod up and down once. Bring back the mixing rod to its original position in the lower third of the cartridge.



3. Release the orange sealing ring from the mixing rod and press it firmly into the cartridge.



4. Connect the vacuum hose to the vacuum port on the orange sealing ring. The charcoal filter must be connected to the vacuum pump by an unsterile person when ready to mix.



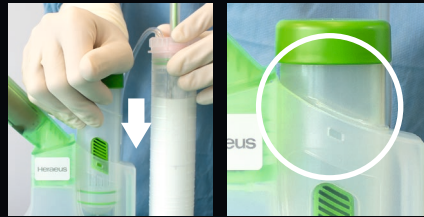
5. Flex the ampoule casing quickly and firmly down to the pro unit base to break the ampoules. Then release the ampoule casing allowing it to return to its original position.



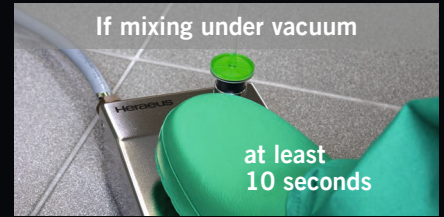
6. Check the liquid transfer to the middle chamber using the transparent inspection window. The transfer can take up to 10 seconds.



7. Push in the green plunger button once and release (located above the inspection window). The button will remain pushed in.



8. Press the plunger down evenly until the curved stop edge of the plunger rests completely on the casing. Do not rotate the plunger while pressing it down.



9. Immediately after pressing the plunger down activate the vacuum pump and wait at least 10 seconds before mixing. Keep the pump operating until the end of the mixing procedure.



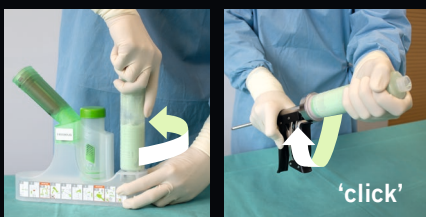
10. Mix the bone cement by moving the rod with 1 stroke per second. Rotate it up and down along the entire length of the cartridge for at least 20 seconds until a homogeneous dough develops.



11. If mixed under vacuum, remove the vacuum hose from the vacuum port.



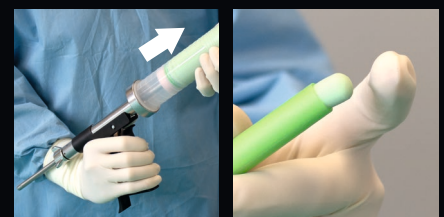
12. Pull the mixing rod up until it stops and break it off quickly at the predetermined breaking point. Keep the mixing rod for subsequent extrusion of any cement residue from the long nozzle.



13. Unscrew the cartridge counterclockwise from the pro unit base and attach it onto the cement gun with a rotary turn until you hear an audible 'click'.



14. Screw the selected nozzle onto the cartridge. Combine the short nozzle with a pressuriser if needed.



15. Advance the cement to the tip of the nozzle. The cement can be applied as soon as it no longer sticks to the glove.

